



TT-316AC – Class-leading towing for manufacturing and warehousing.

| | |
|----------------|------------------------|
| VOLTAGE | 36 volt |
| SPEED | 8 mph / 12.8 km/h |
| RANGE | 18 mi / 29 km |
| TURNING RADIUS | 74.5 in / 189 cm |
| TOW CAPACITY | 16,000 lb* / 7,250 kg* |



SAFETY

- Automatic braking on gas pedal release and automatic parking brake
- Reverse beeper
- Operator presence sensor
- High visibility LED headlight, combination tail lights
- Optional high visibility light bar and pedestrian light for increased visibility



PERFORMANCE/ RELIABILITY

- AC efficient motor
- Regenerative braking
- Powerful GT drive
- All steel construction
- Taylor-Dunn Quality



COMFORT

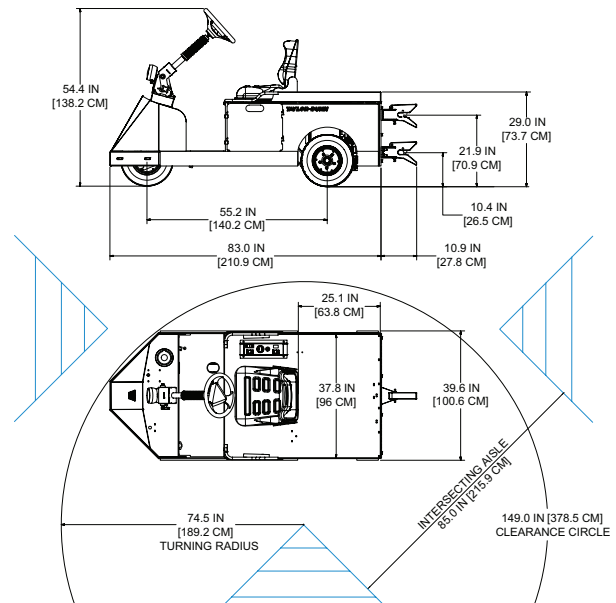
- Tilt/Telescoping Steering
- Front and rear suspension
- Premium semi-suspension seat
- Rear deck storage area
- Low 10.5 in (26 cm) step height

PERFORMANCE

| | |
|----------------------|------------------------|
| LOAD CAPACITY | 400 lb / 182 kg |
| TOW CAPACITY | 16,000 lb* / 7,257 kg* |
| DRAWBAR PULL | 320 lb / 1.42 kN |
| MAX SPEED (UNLOADED) | 8 mph / 12.8 km/h |
| TURNING RADIUS | 74.5 in / 189 cm |

DIMENSIONS

| | |
|-------------------|-----------------------------|
| OVERALL LENGTH | 83 in / 211 cm |
| OVERALL WIDTH | 39.5 in / 100 cm |
| OVERALL HEIGHT | 54 in / 138 cm |
| WHEEL BASE | 55 in / 140 cm |
| DECK SIZE (W x L) | 38 x 25 in / 96.5 x 63.5 cm |
| DECK HEIGHT | 29 in / 74 cm |



POWER SUPPLY / DRIVE TRAIN

| | |
|----------------|---|
| MOTOR | 7.5 HP AC |
| SYSTEM VOLTAGE | 36 Volt |
| DRIVE AXLE | GT Automotive Differential |
| BATTERY | Less Battery, SBX 175 Gray, 38W x 16L x 15H in (96W x 40L x 38H cm) |
| CHARGER | Less Charger |
| CONTROLLER | 450 Amp, 36 Volt, AC |

CHASSIS

| | |
|------------|--|
| FRAME | Fully Welded, Unitized, 10 Gauge |
| STEERING | Tilt/Telescoping Gear Steering |
| SUSPENSION | Front Coil Springs, Rear Leaf Springs |
| BRAKES | 3-Wheel Hydraulic Disc, Automatic/Electric Parking Brake |
| TIRES | 4.80 x 8, Load Range C, Pneumatic |

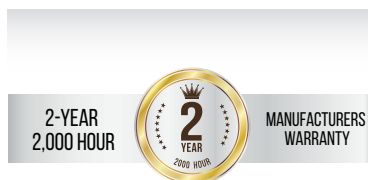
GENERAL

| | |
|-------------------|--|
| MAXIMUM OCCUPANCY | 1 / 250 lb (113 kg) |
| UNIT WEIGHT | 1,150 lb / 522 kg |
| SEAT | Single, Adjustable, Black Vinyl, with Spring Suspension, Electric Interlock Switch |
| INSTRUMENTATION | Smart View Display (Battery Status Indicator, Hour Meter, Fault Code Display) Forward/Reverse Selector, Key Switch, Electric Horn, Reverse Alarm, DC/DC Converter |
| LIGHT ACCESSORIES | LED Headlight, Taillight, Brake Light, Optional Light Bar with Reverse, Strobe and Brake Light |
| HITCH | Automatic Coupling |
| CONFORMANCE | Type E OSHA 1910.178, ANSI B56.9 |

OPTIONS

- Light bar
- Portable charger
- Blue pedestrian light
- Non-marking tires
- Roll-out or slide-out battery box
- Beacon or strobe light
- Automatic hitch w/ hand release
- Soft solid tires
- Various hitches
- Custom paint color
- Rubber bumper

WARRANTY



PROCUREMENT

